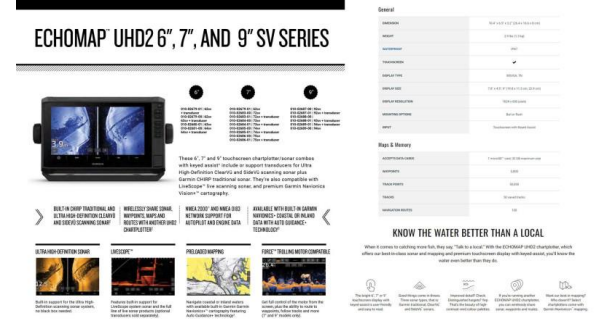




Quintrex Hornet 510 + Yamaha F115hp - PACK 2 FOR SALE

62550



Description

The Quintrex 510 Hornet is a serious fishing boat, with Pack 2 optioned by our expert team for anglers who want space, stability, and performance. Its wide 2.3m beam and large casting platforms give you plenty of room to move, fish, and stay organised on the water. The Yamaha F115HP 4-stroke delivers strong, reliable power with smooth control, while the Garmin sounder helps you find fish with confidence. Backed by a tough Quintrex trailer and solid hull construction, this setup is built for Aussie conditions. Its a practical, no-fuss rig ready for long days chasing fish.

PACK 2 INCLUSIONS:

- QUINTREX 510 HORNET - PAINTED IN WHITE WITH FACTORY FITTED INCLUSIONS - Casting platform rear live bait tank, front casting platform, helm: side console mechanical tilt steering, anchorwell, folding cleat, glove box, maxi bracket, rear ladder, rod holders (2), transom pads, bow mount thruster plate, fully welded gunnels side decks, side decks folded, side pockets, transducer brackets x 2, painted hull, rails: side, side rails, seat positions (4), seats: pedestal.
- QUINTREX BRAKED TRAILER 1298ATM - 13 Inch Alloy Wheels, 13 Inch Tyres, 4 Alloy Cross Members, 50mm Coupling Braked (2Tonne), 7 Pin Plug, Adjustable Keel Rollers (Dual), Adjustable Keel Rollers (Single), Adjustable Long Skids, Axle 45 Square, Clearance Lights, Disc Brakes, Draw Bar, Flippers (4), Forward Facing White Light, Jockey Wheel Swing Up, LED Lights, Loader Cradle, Motor Support, Rolled Frame Alloy I-Beam, Winch 5:1
- SPARE WHEEL AND CARRIER - Includes matching wheel and tyre
- CATCH AND RELEASE BRACKET - Easy drive-on single-person boat hookup at the boat ramp
- YAMAHA F115HP 4-STROKE - Forward Control with 703 Control Box, 2x Multifunctional LAN Digital Gauges, Power Trim Tilt, Electric Start, SDS Alloy Prop, Fuel Filter, Workshop fitted Tested, Bolted on with PVC backing board, Loom Control Cables, Dealer Delivery Training
- GARMIN UHD2 95SV CHARTPLOTTER/SOUNDER COMBO - Garmin Navionics+ Australia New Zealand Mapping preloaded, Bright sunlight-readable 9 keyed display, High-contrast vivid colour palettes, Traditional CHIRP and ClearV scanning sonars
- GME GX750B VHF MARINE RADIO - Compact modular design, Large LCD with brightness colour options, IPX7 ingress protection, Waterproof speaker microphone, 25/1 Watt Switchable Power, Dual Triple Watch with Programmable Priority Channel, Two Working Channel Memories
- BIMINI AND ENVELOPE - Provides shade and shelter, can be folded together and safely covered/protected with the envelope
- UPGRADE HYDRAULIC TILT

- DRINK HOLDER CUPS (2)

- MARINE BATTERY WITH BOX ISOLATION SWITCH - Australian made marine rated battery with warranty

- COCKPIT LIGHTS X 2

-12-MONTHS QLD REGISTRATION FOR BOAT AND TRAILER

- FULL IN-SHORE SAFETY GEAR (4.8m+) - 70L Water, proof bag, 4x PFD (type 1) life jackets, LED torch, V-Sheet, Signal Mirror, 2x Telescopic Paddles, Anchor Kit with Rope Chain, Inshore Flares (2x red, 2x orange), 1kg Fire Extinguisher

SPECIFICATIONS:

Hull Length: 5.36m
Beam: 2.3
Max. HP: 140hp
Number of People: 5
Fuel Tank: Under Floor 80L
Boat Weight: 580kg
Motor Weight: 220kg
Transom Shaft Length: LS
Top Sides: 3mm
Bottom Sides: 4mm
Transom Material: 4mm

STANDARD FEATURES:

Casting Platform Rear Live Bait Tank, Front Casting Platform, Helm: Side Console Mechanical Tilt Steering, Anchorwell, Folding Cleat, Glove Box, Maxi Bracket, Rear Ladder, Rod Holders (2), Transom Pads, Bow Mount Thruster Plate, Fully Weld Gunnels Side Decks, Side Decks Folded, Side Pockets, Transducer Brackets x 2, Painted Hull, Rails: Side, Side Rails, Seat Positions (4), Seats: Pedestal, Helm: Mechanical Tilt Steering

AVAILABLE OPTIONS:

Covers: Bimini Envelope, Burley Bucket, Casting Platform Central Live Bait Tank, Cockpit Lights (2), Drink Holder Cups, Marine Radio, Sound System Speakers, Twin Battery Box Switch, Deluxe Rod Locker, Quintrex Hornet Captain's Bundle, Quintrex Hornet Fishing Bundle, Painted Two Tone, Rails: Console Grabrail, Seat Pedestal, Seats: Angler Sport, Seats: Bass Sport, Seats: Lean Seat, Helm: Hydraulic Steering, Vinyl Wrap

Please note that some images may display optional extras that are not included in this package; please refer to the package listings for full details. Additionally, not all packages advertised online are held in stock, as they are intended to provide a guide on pricing and inclusions. At BY, we take the time to understand your needs, offering honest advice and expert knowledge to ensure you receive the right boat, set up to suit your requirements because to us, its not just about the sale. We can also assist with finance and insurance (to approved applicants), and if youre looking to trade or sell your boat, our experienced team can provide a professional, obligation-free valuation.

BRISBANE YAMAHA - (07) 3888 1727, Bruce Highway, Burpengary QLD